

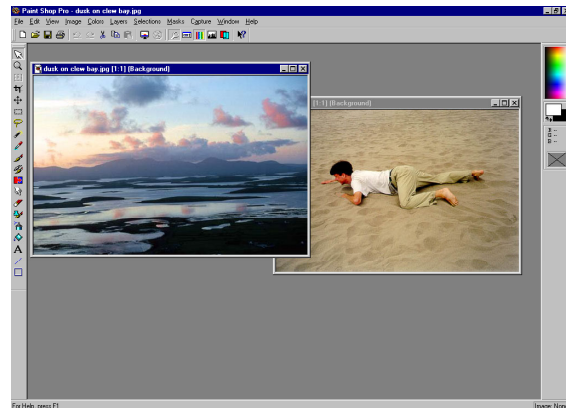
Welcome to the Paint Shop Pro Tutorial

1. Introductions

2. Overview

3. Open up an image for a background

image. (File -> Open) Choose from outdoor scenery or space scenery.



4. Cut out your picture using the Lasso

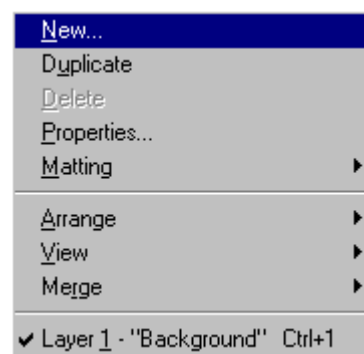
tool. 



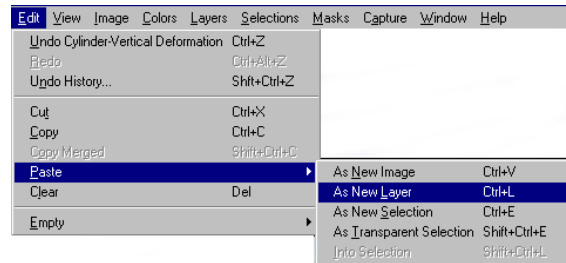
5. Copy your selection (Ctrl-C).


6. Go to the background image, go to

Layers -> New to make a new layer.



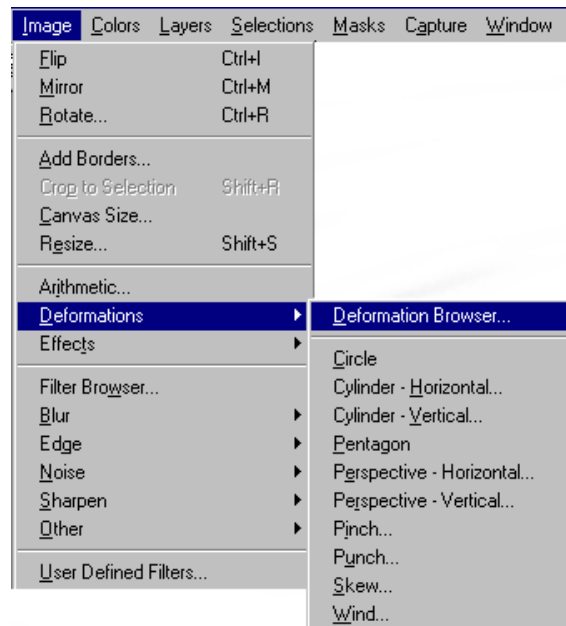
7. Go to the background image, go to Edit
->Paste ->As New Layer to paste your
picture on top of the background.



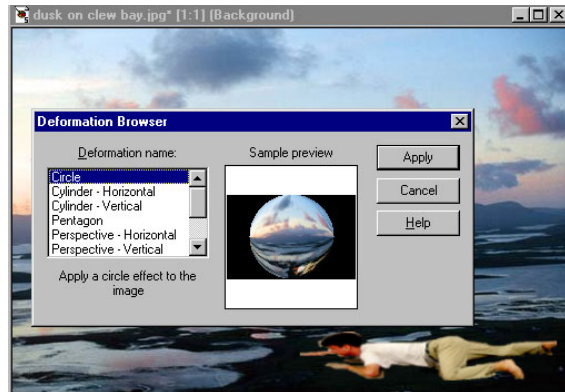
8. Move your picture to where you want it
on the background image using the
Move tool. 



9. Go to Image ->Deformations -
>Deformation Browser for a chance to
distort your picture.




10. You should see what your picture will look like when you choose different types of deformations. Pick one that you like.



11. Go to Layers ->New


12. Now you can draw on your image.

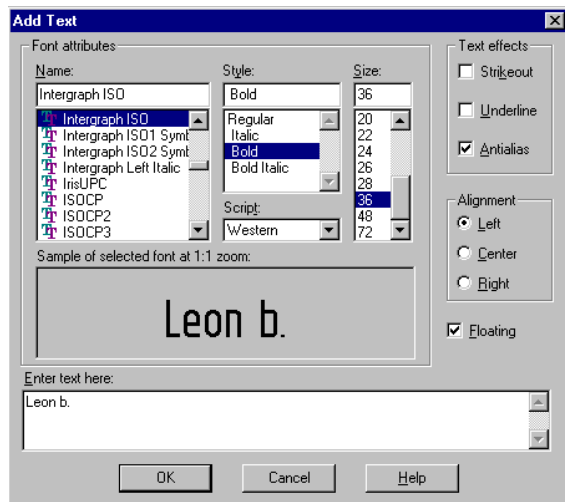
Go to the Paintbrush tool  and try drawing with it. Try choosing different brush types, colors, and sizes.



13. Go to Layers ->New

14. Now put your name on it. Go to the

Text tool  and click on the picture somewhere. Choose the font you want and the size you want. Type in your first name and your last initial.



15. Time to save it. Go to File ->Save As... Type in your first name and last initial and put “.jpg” after it.
16. Now save it to disk so that you can have a copy of it. Again, go to File ->Save As... Now choose 3 ½ Floppy and save it to your disk.



Quick Commands:

Undo: *Ctrl-z*

Copy: *Ctrl-c*

Unselect: *Ctrl-d*

Paste As New Selection: *Ctrl-e*

Save As...: *F12*

